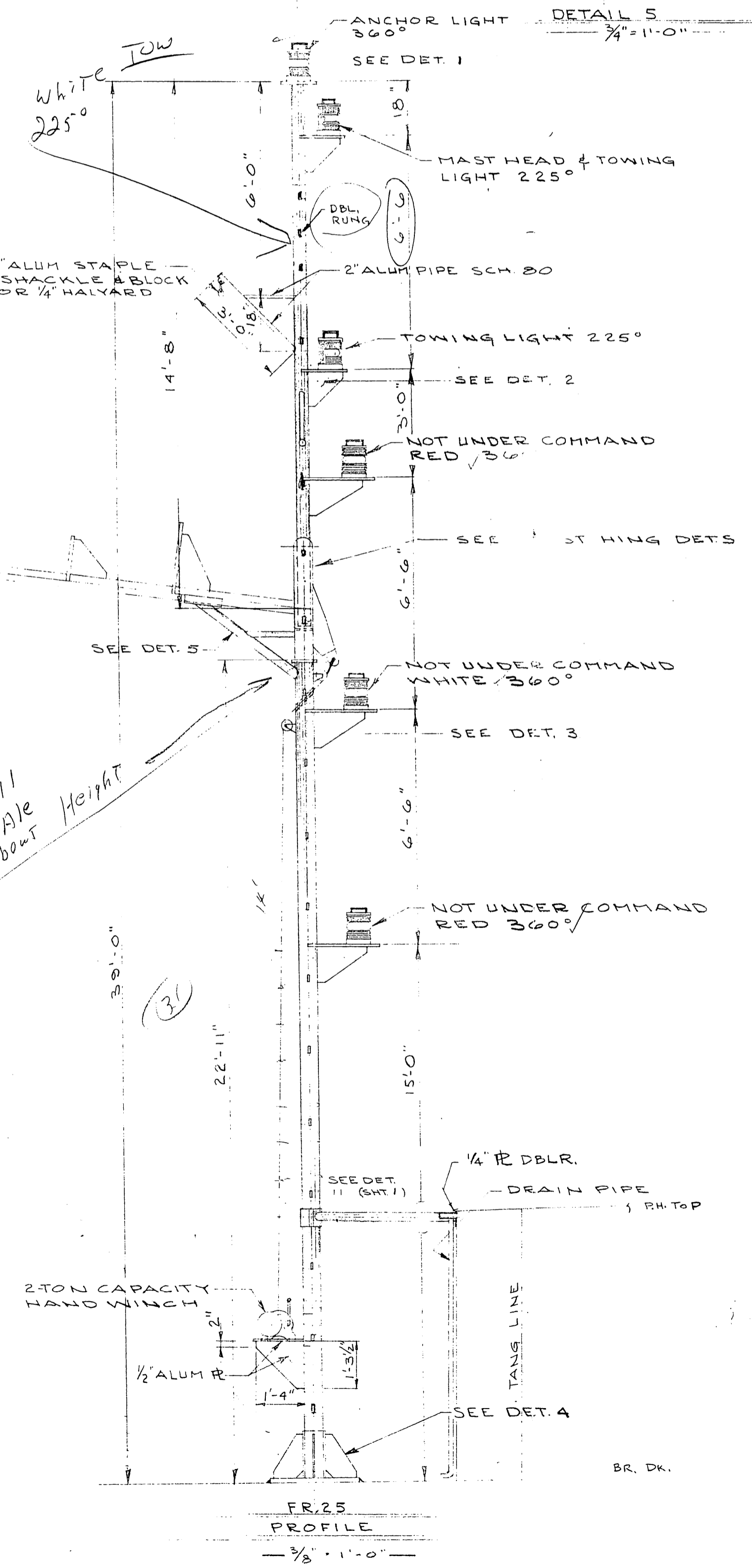
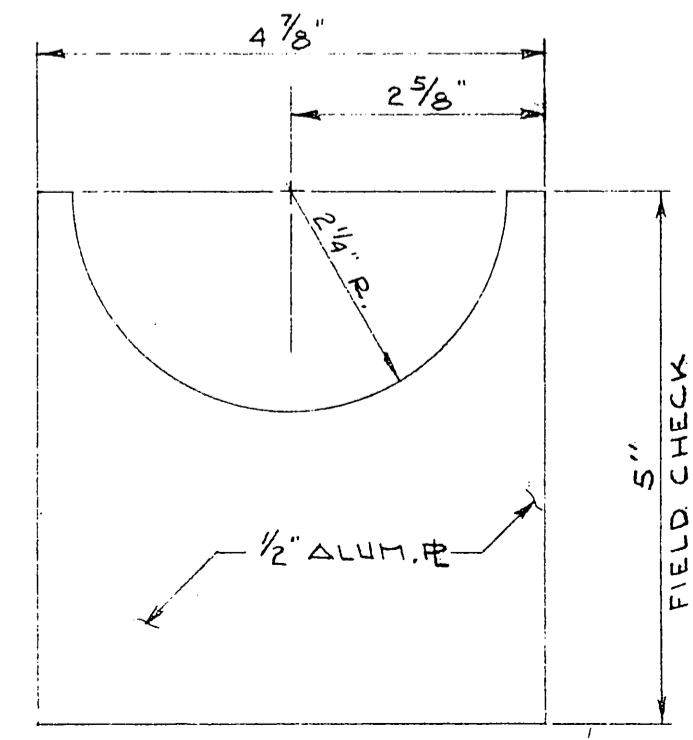
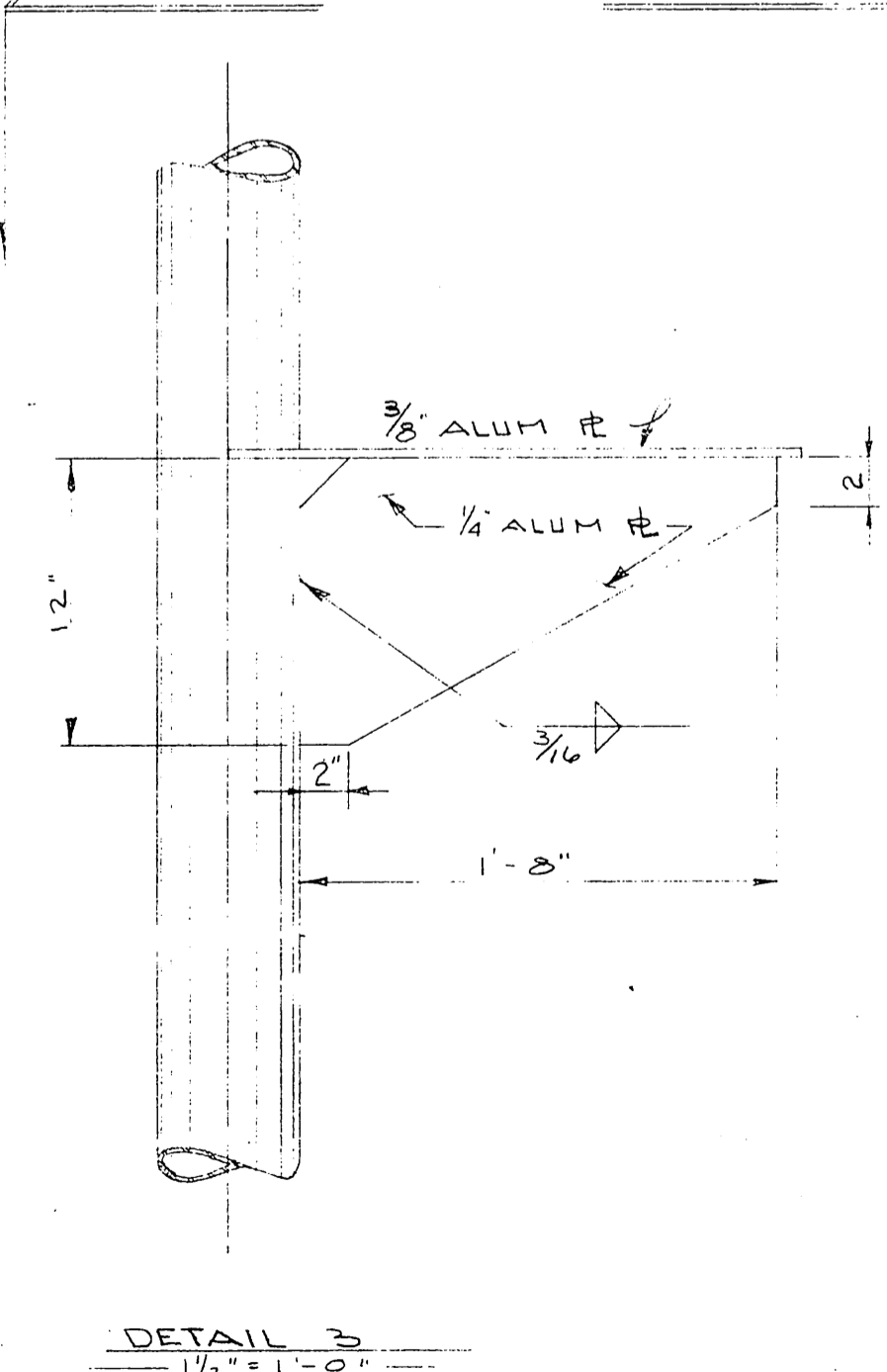
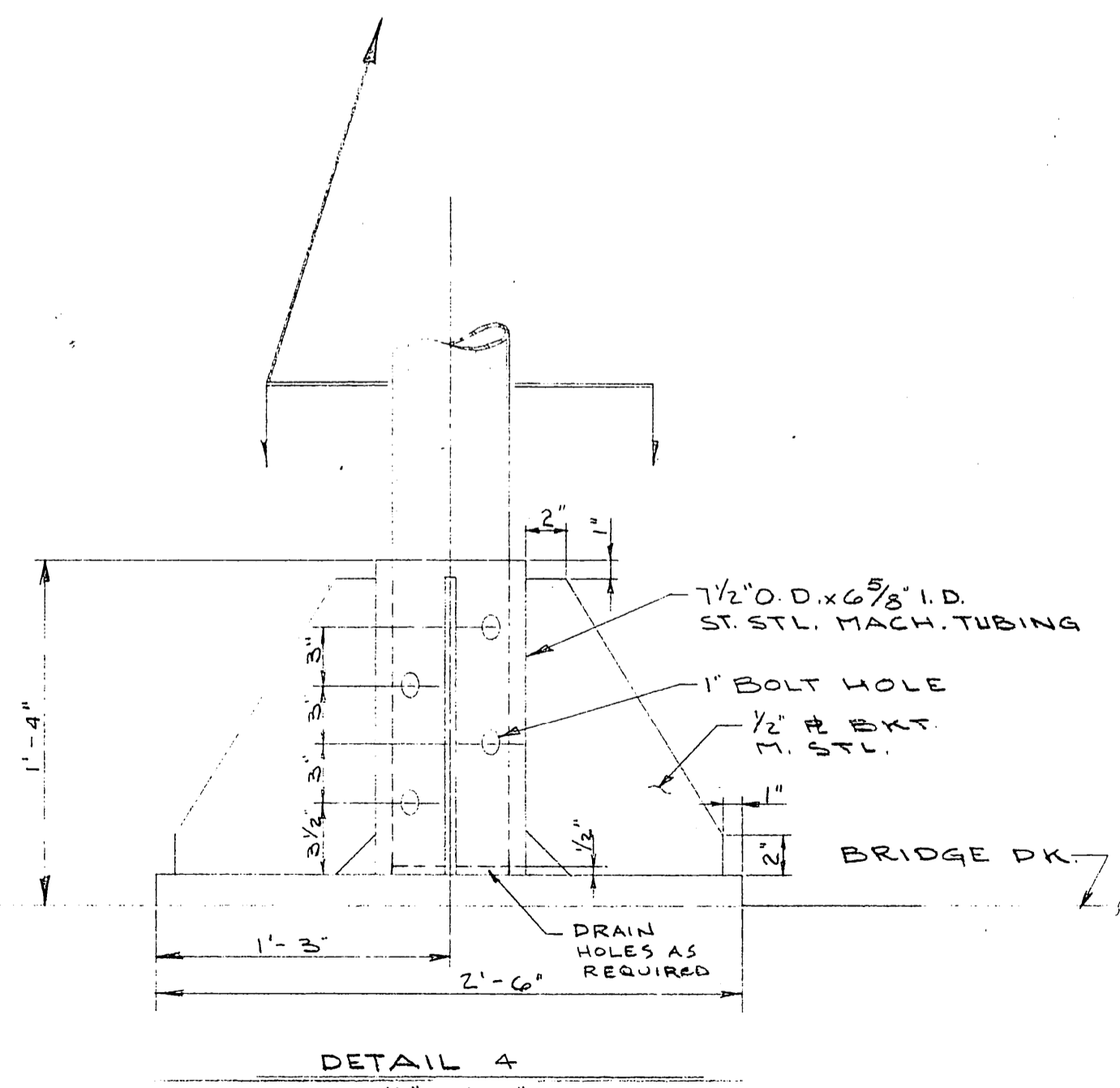
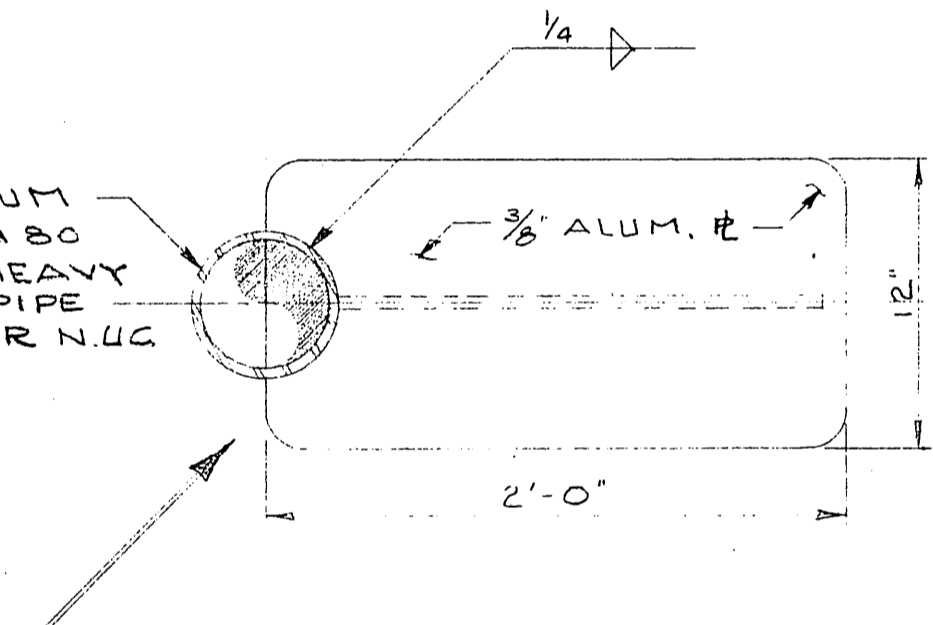
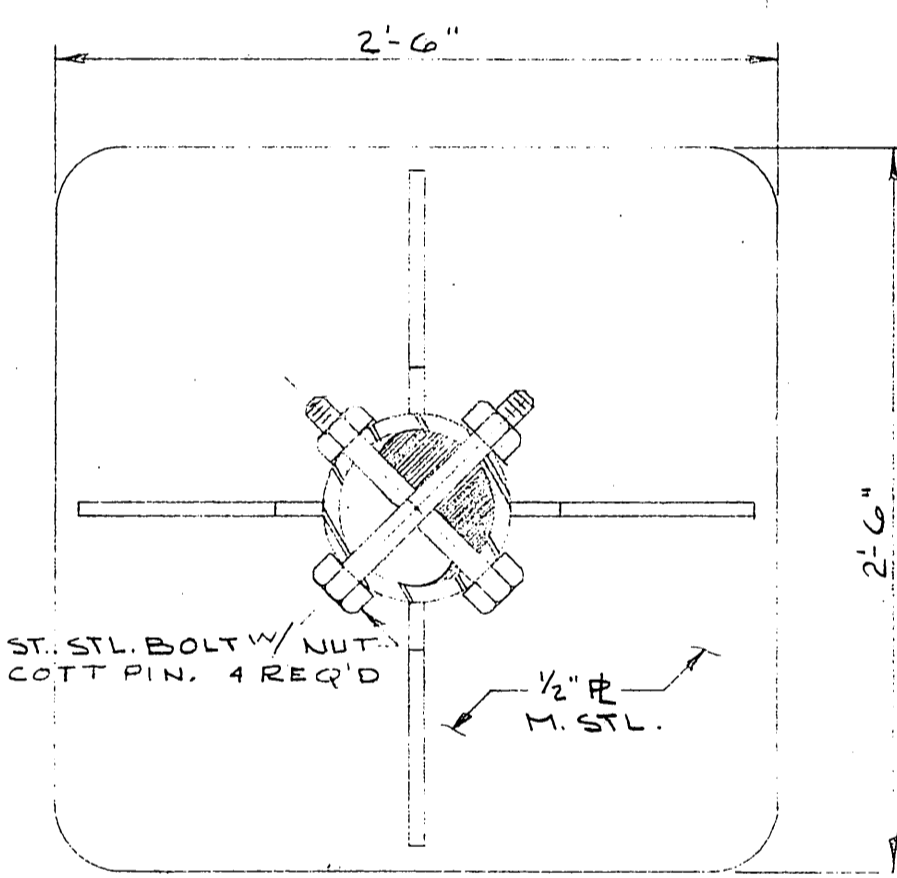
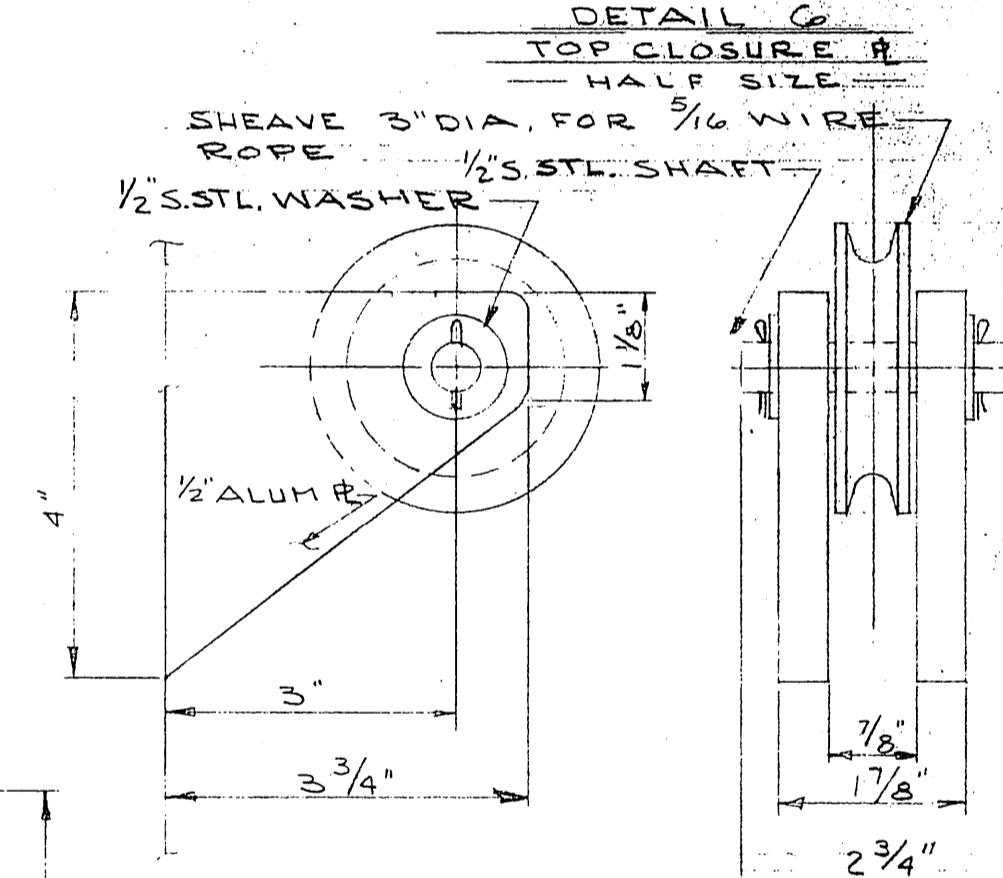
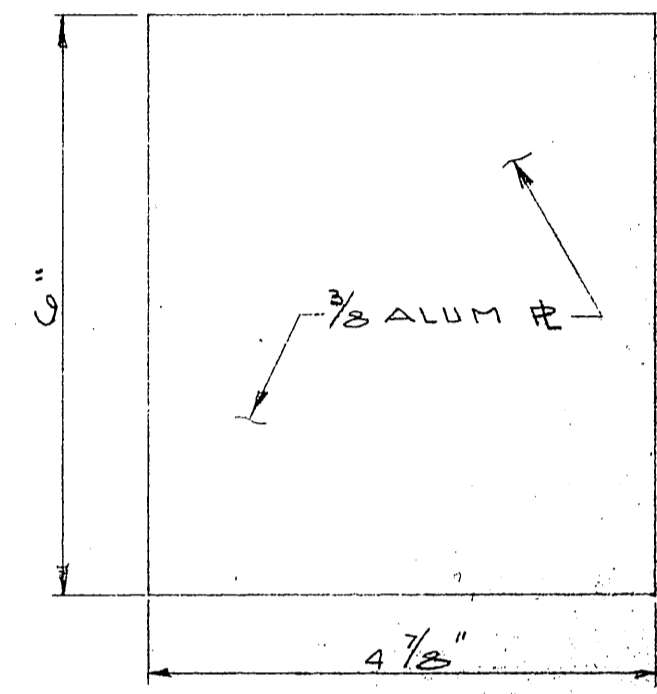
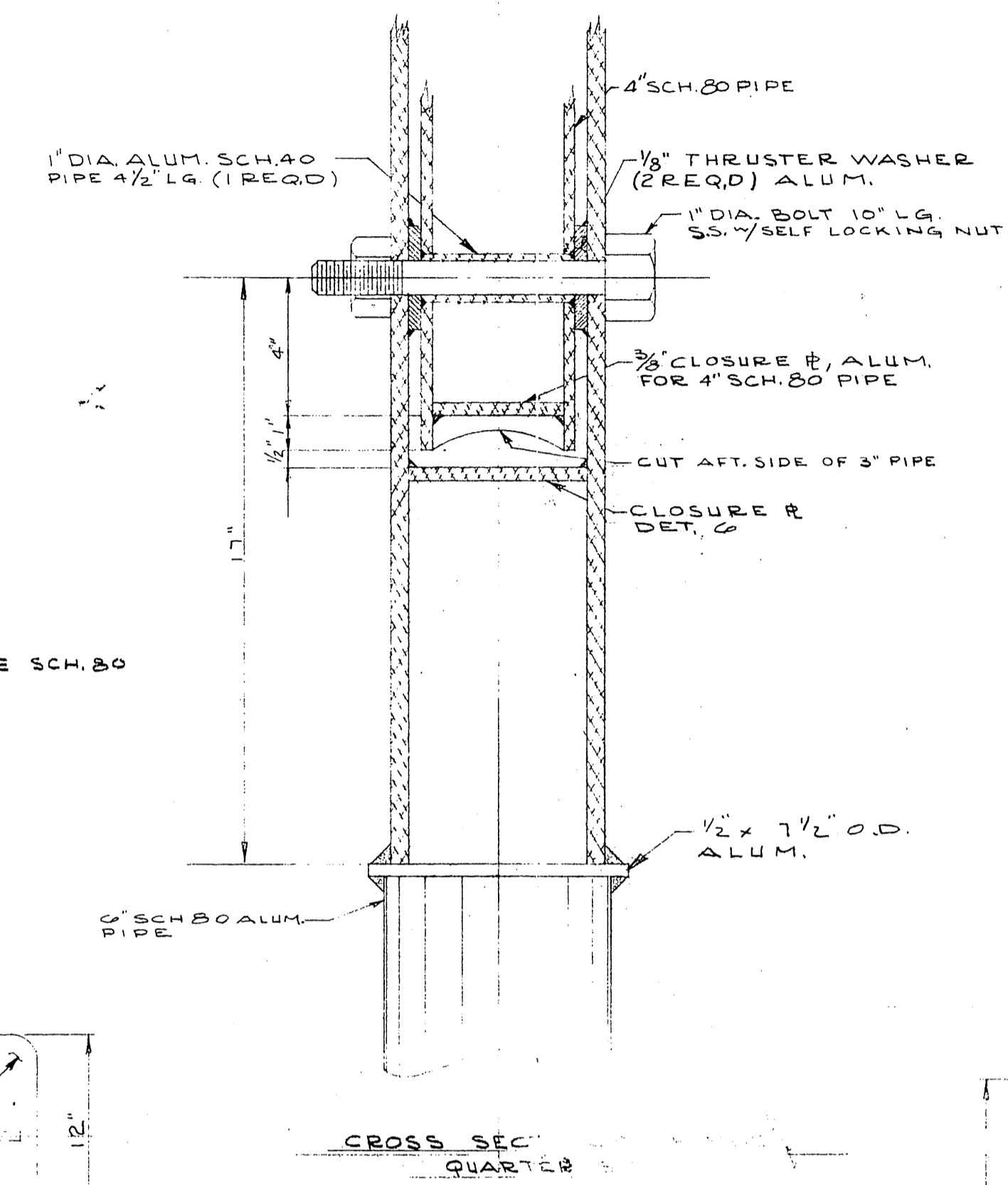
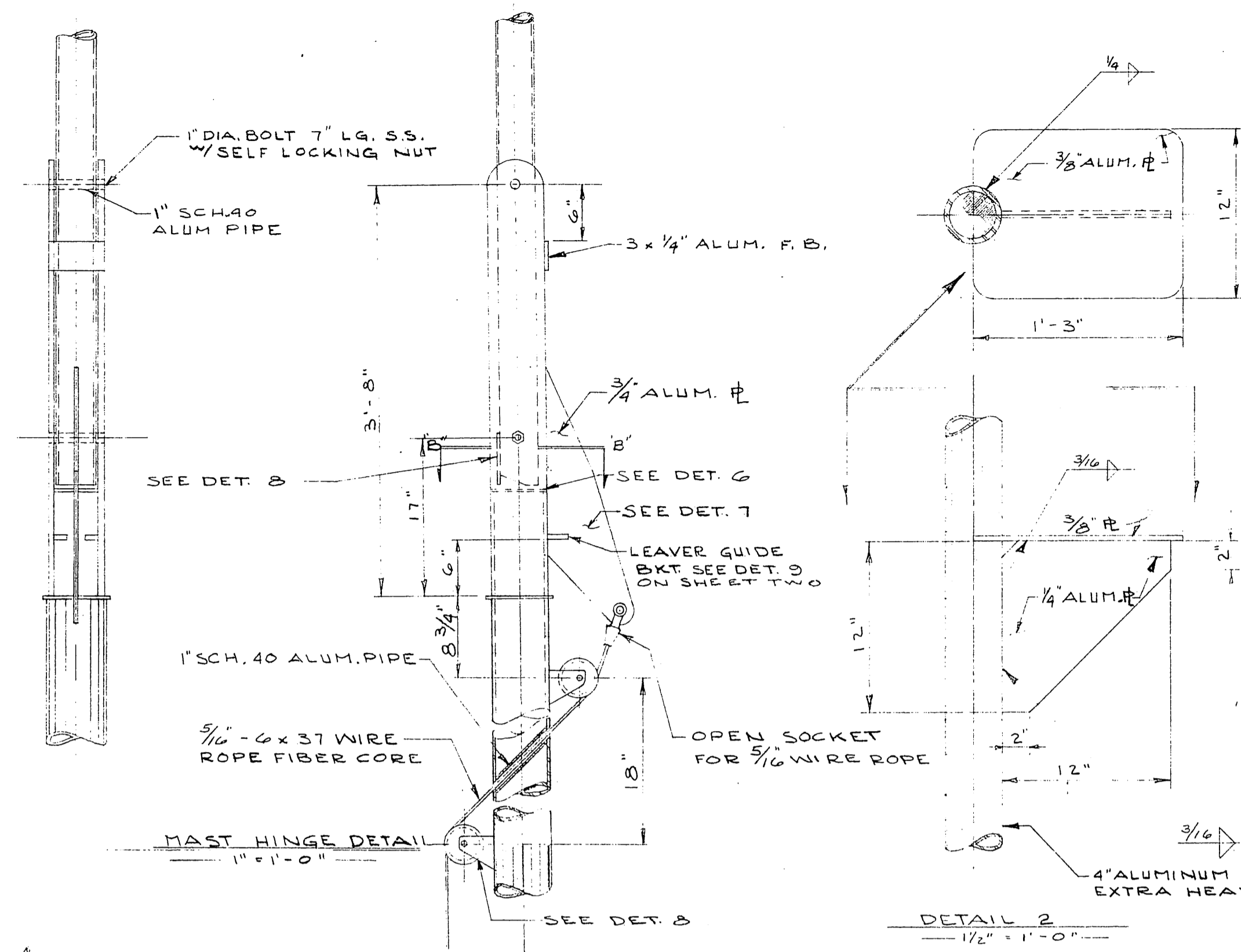
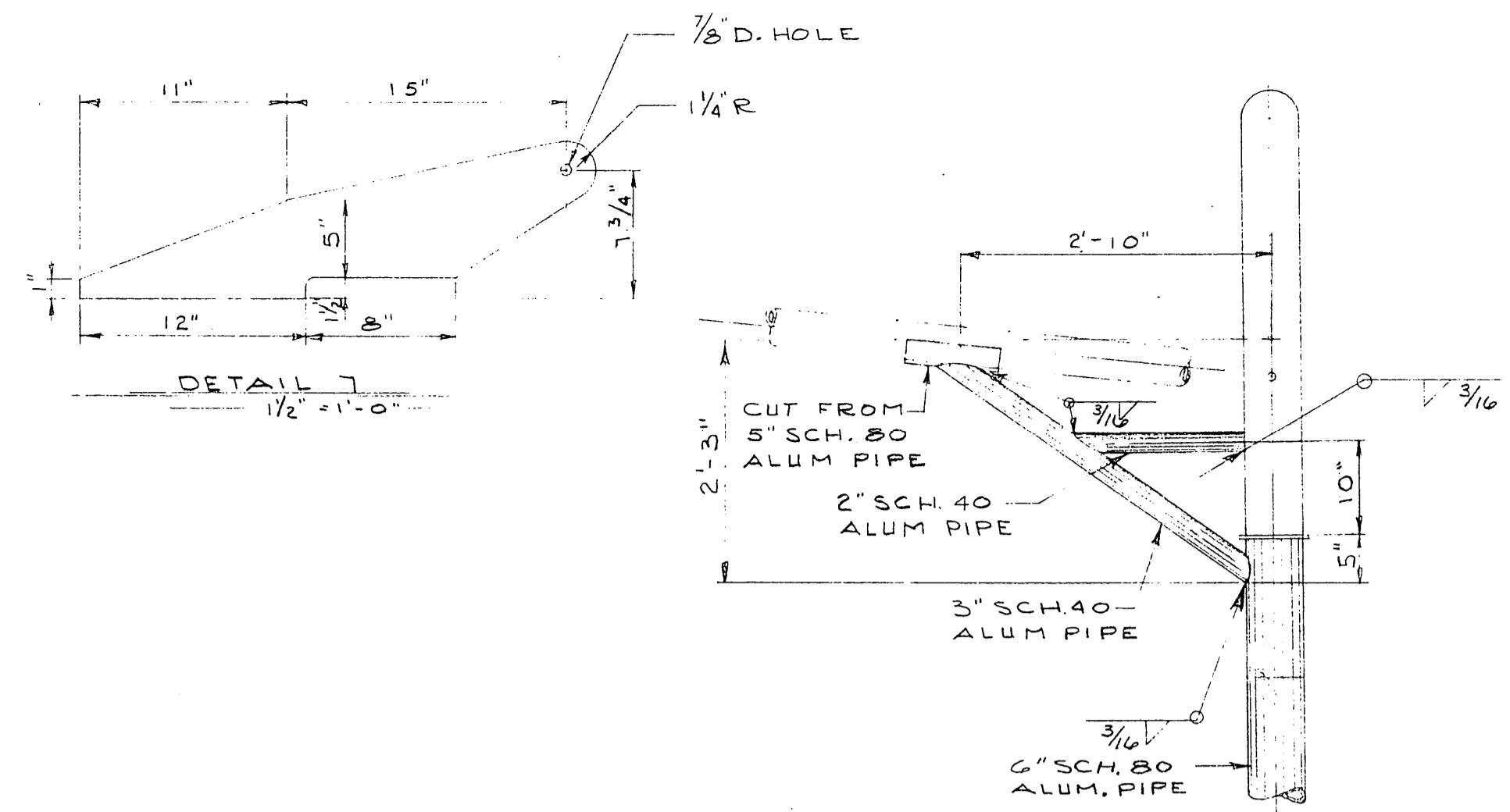


REV. MK	DESCRIPTION	BY	DATE	APPROV.



MISSISSIPPI MARINE HULL # 30

DESIGN ASSOCIATES, INC.
 NAVAL ARCHITECTS MARINE ENGINEERS
 NEW ORLEANS, LA.

TIDEWATER MARINE SERVICE

143' x 36' x 10'-0" SEISMIC VESSEL

MAST # DETAILS
 (SHEET TWO)

Drawn: Bourgeois	Date: 11-5-81	Checked: J.D.
Traced:	Date:	Checked:
Aprvd:	Date:	Scale: NOTED

Sheet 2 of 2 Drawing No. C-2062-55

Const

CALL DATE About Height

White Tow 225°

3/8 ALUM STAPLE SHACKLE & BLOCK FOR 1/4 HALLYARD

DBL RUNG

TOWING LIGHT 225°

NOT UNDER COMMAND RED 360°

SEE ST HING DETS

NOT UNDER COMMAND WHITE 360°

SEE DET. 3

NOT UNDER COMMAND RED 360°

30'-0"

22'-11"

15'-0"

2TON CAPACITY HAND WINCH

1/2 ALUM R

FR. 2.5 PROFILE

1/2" x 1'-0"

BR. DK.